

26

Views of Gympie.

Published by

H. Israhelyn Gympie.

Photographs by

H. Bennet.

NOTE THE
ADDRESS :

Mary Street,
Gympie.

Llewelyn's Arcade.

The only place in town where the latest

SONGS and
PIANOFORTE PIECES

are obtainable. Any not in stock procured at
shortest notice.

POST CARDS and
POST CARD ALBUMS

A Speciality.

Finest collection of

CHRISTMAS and
NEW YEAR CARDS

from one penny to ten shillings each.

CRICKETING and
LAWN TENNIS GOODS

always in stock.

To Flo, with love from Jessie
5th Dec. 1906



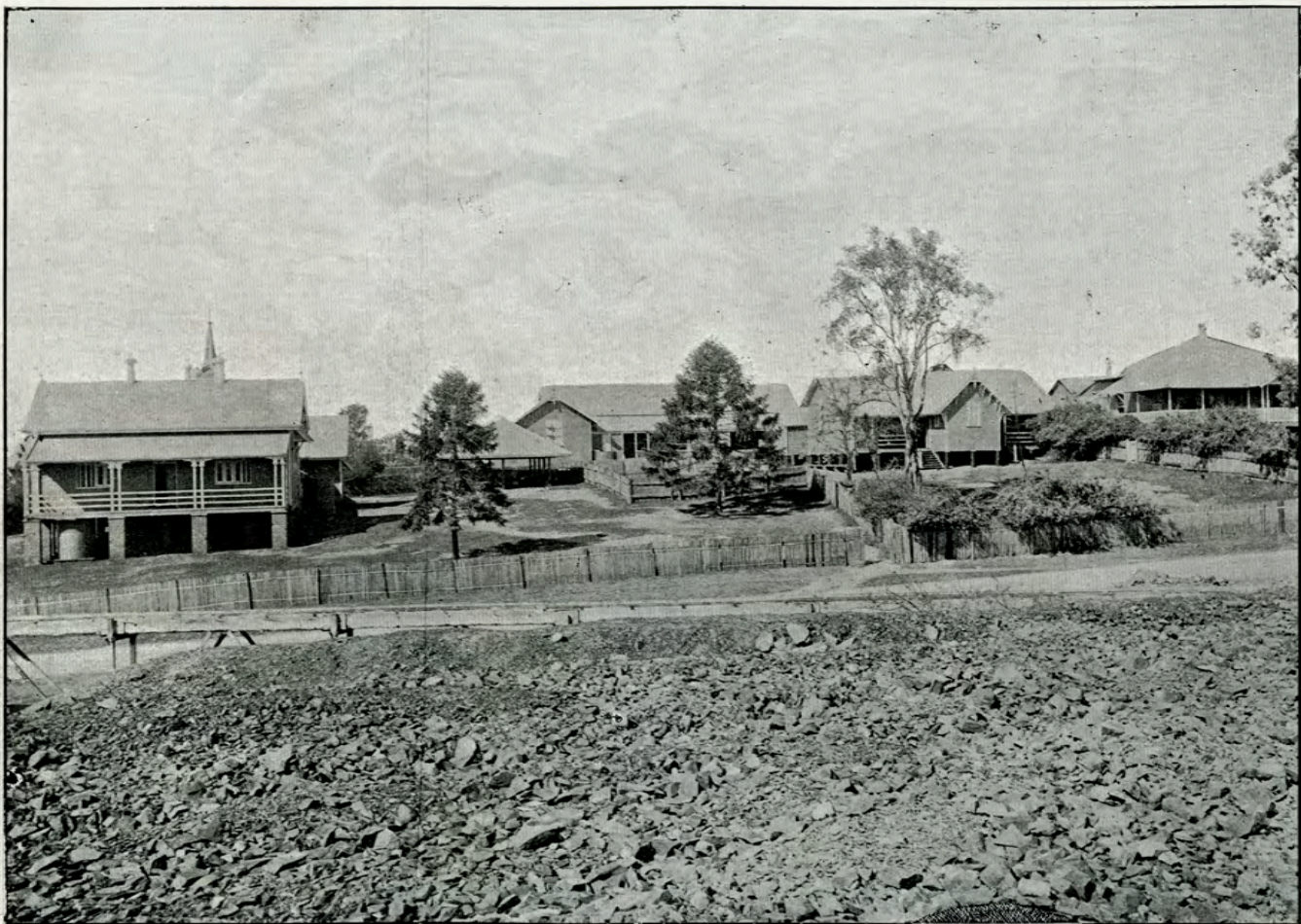
SOUTH END OF MARY STREET, GYMPIE.



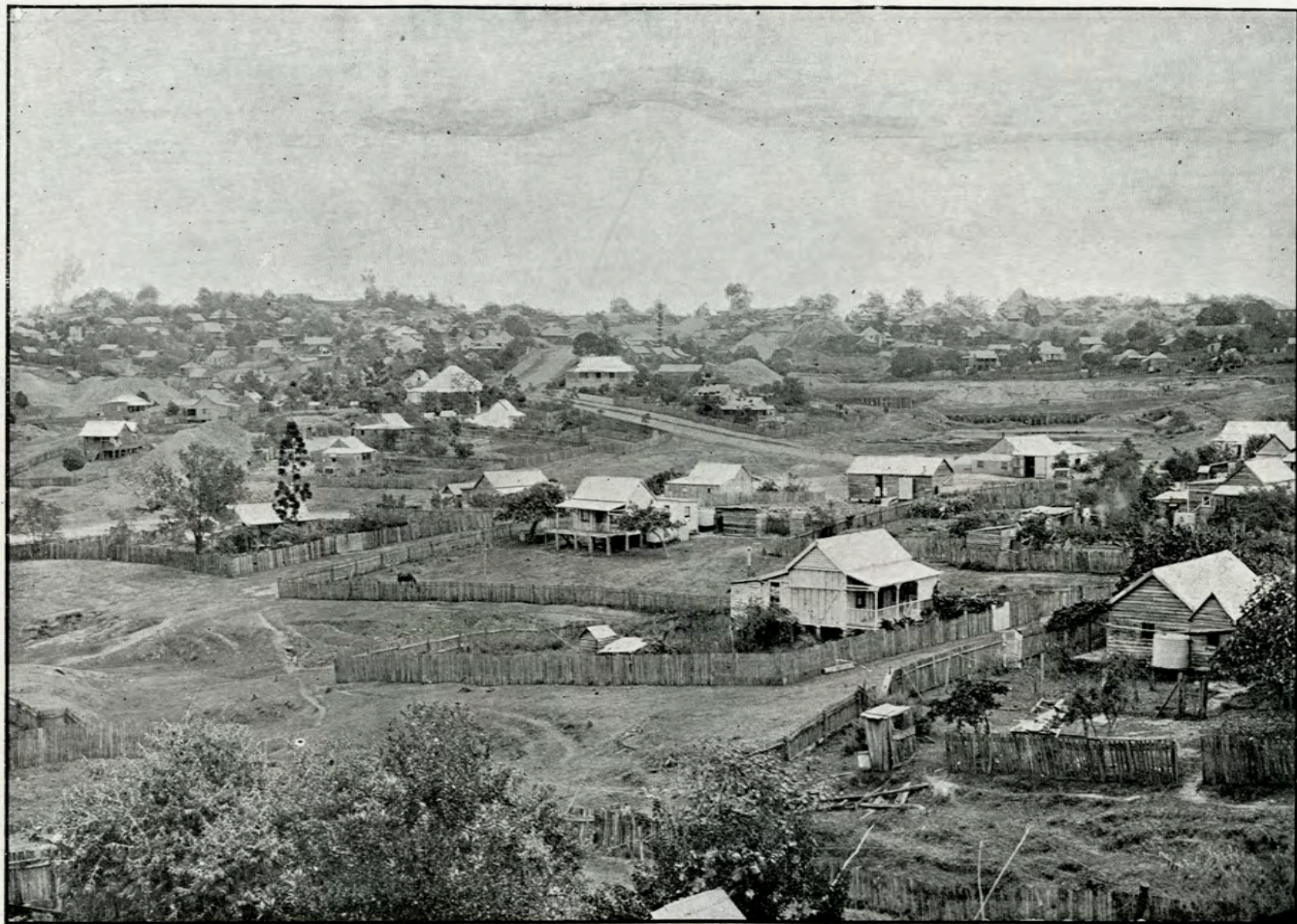
GYMPIE STATE SCHOOLS.



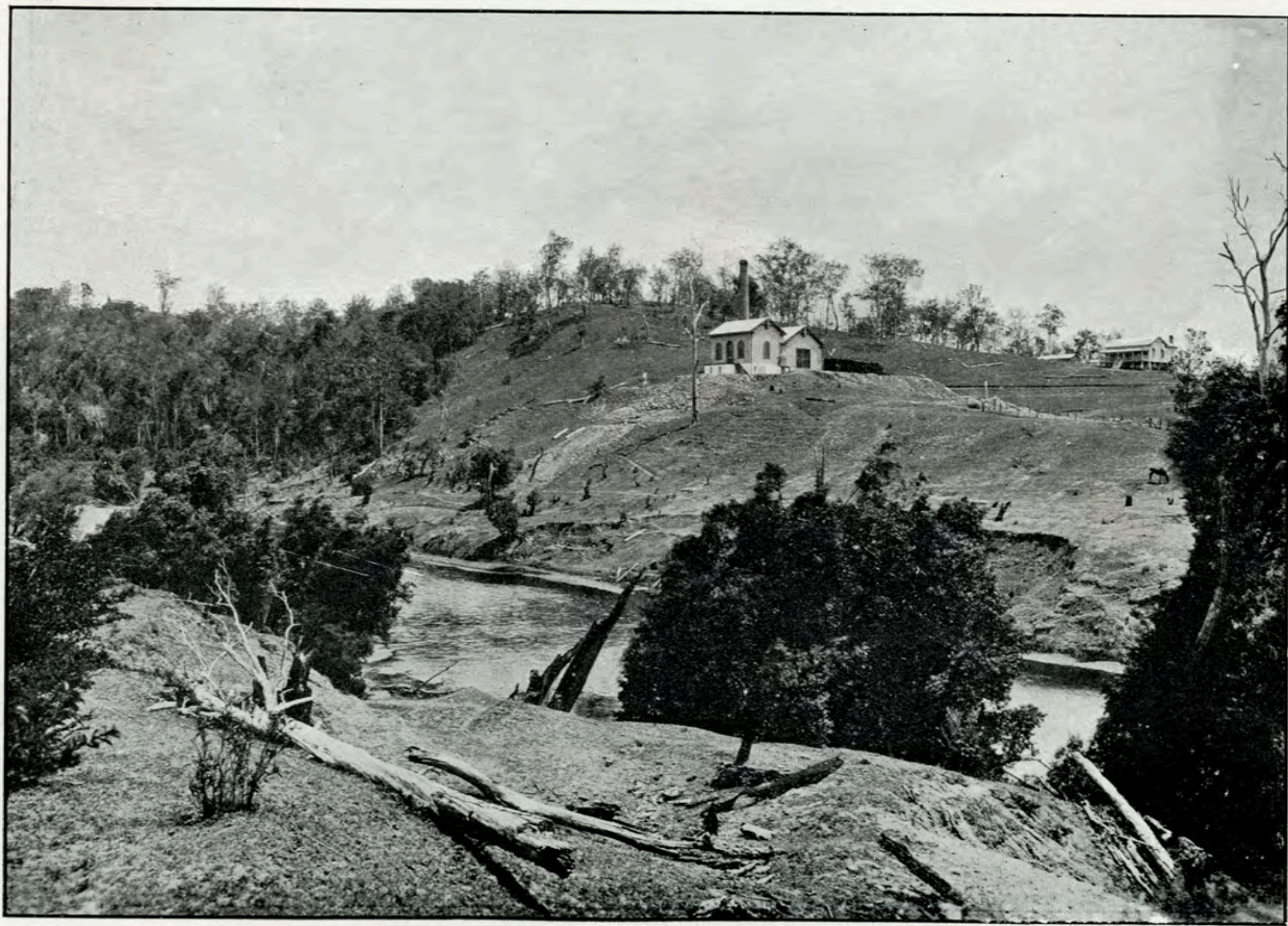
CENTRE OF MARY STREET, GYMPIE.



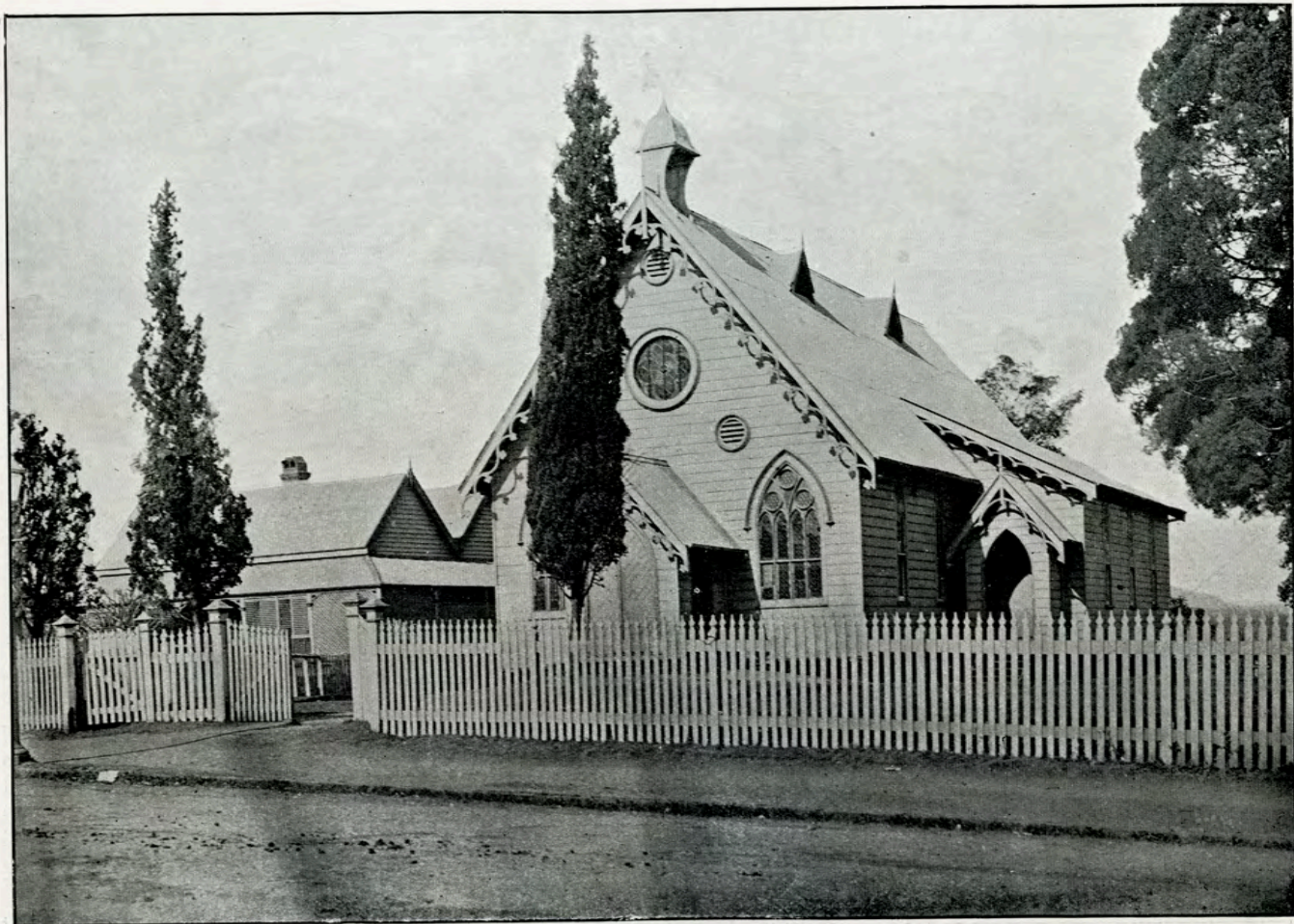
ONE-MILE STATE SCHOOLS, GYMPIE.



VIEW OF HILTON ROAD, GYMPIE.



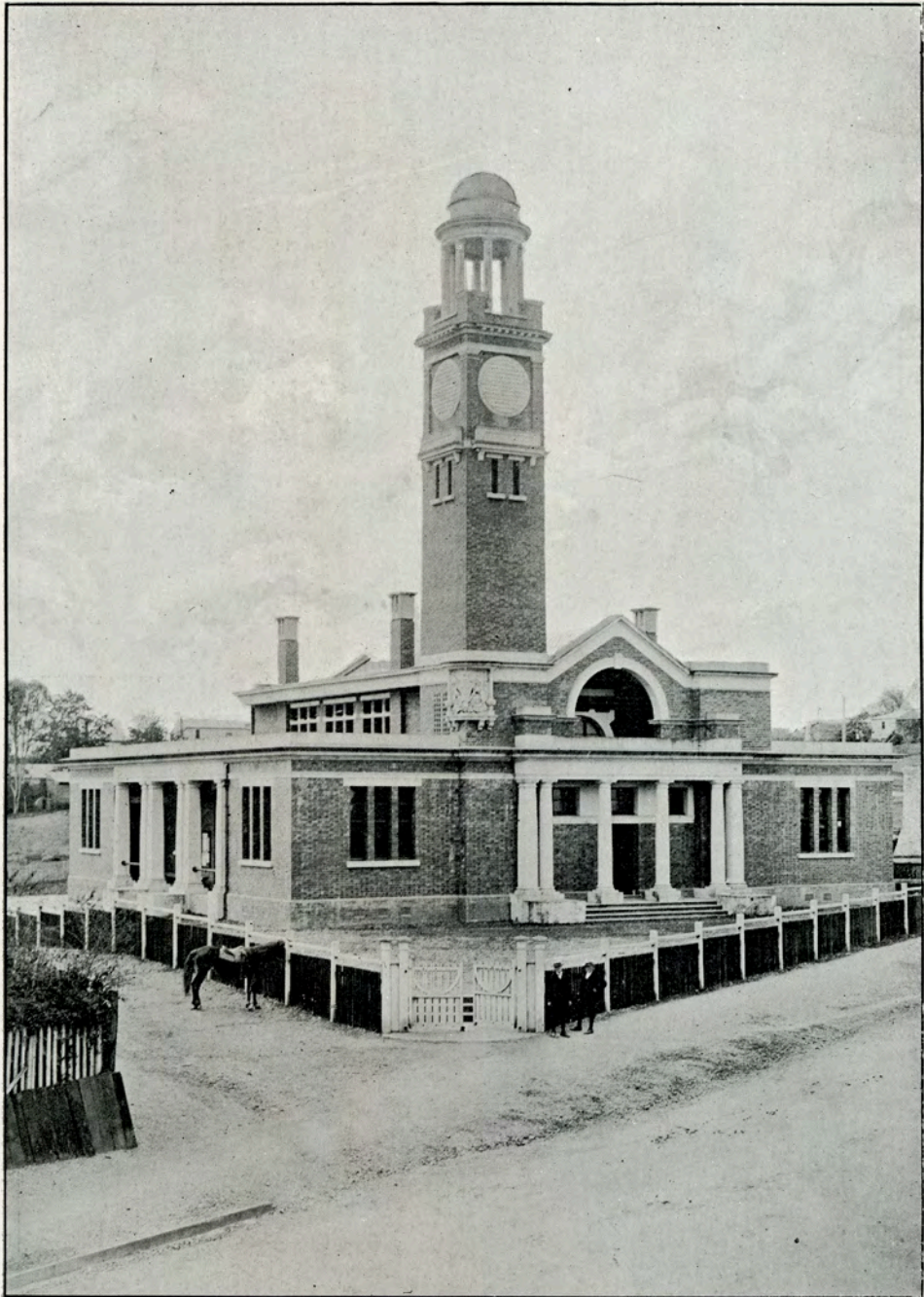
PUMPING STATION, WATERWORKS, GYMPIE.



SCOTCH CHURCH, GYMPIE.



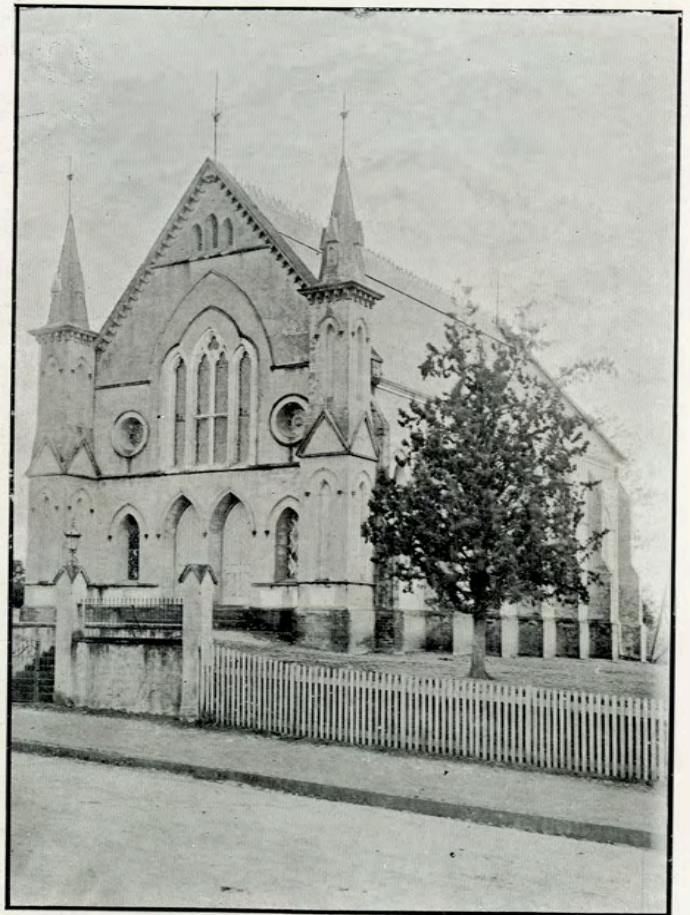
NORTHUMBERLAND HOTEL, GYMPIE.



COURT HOUSE, GYMPIE.



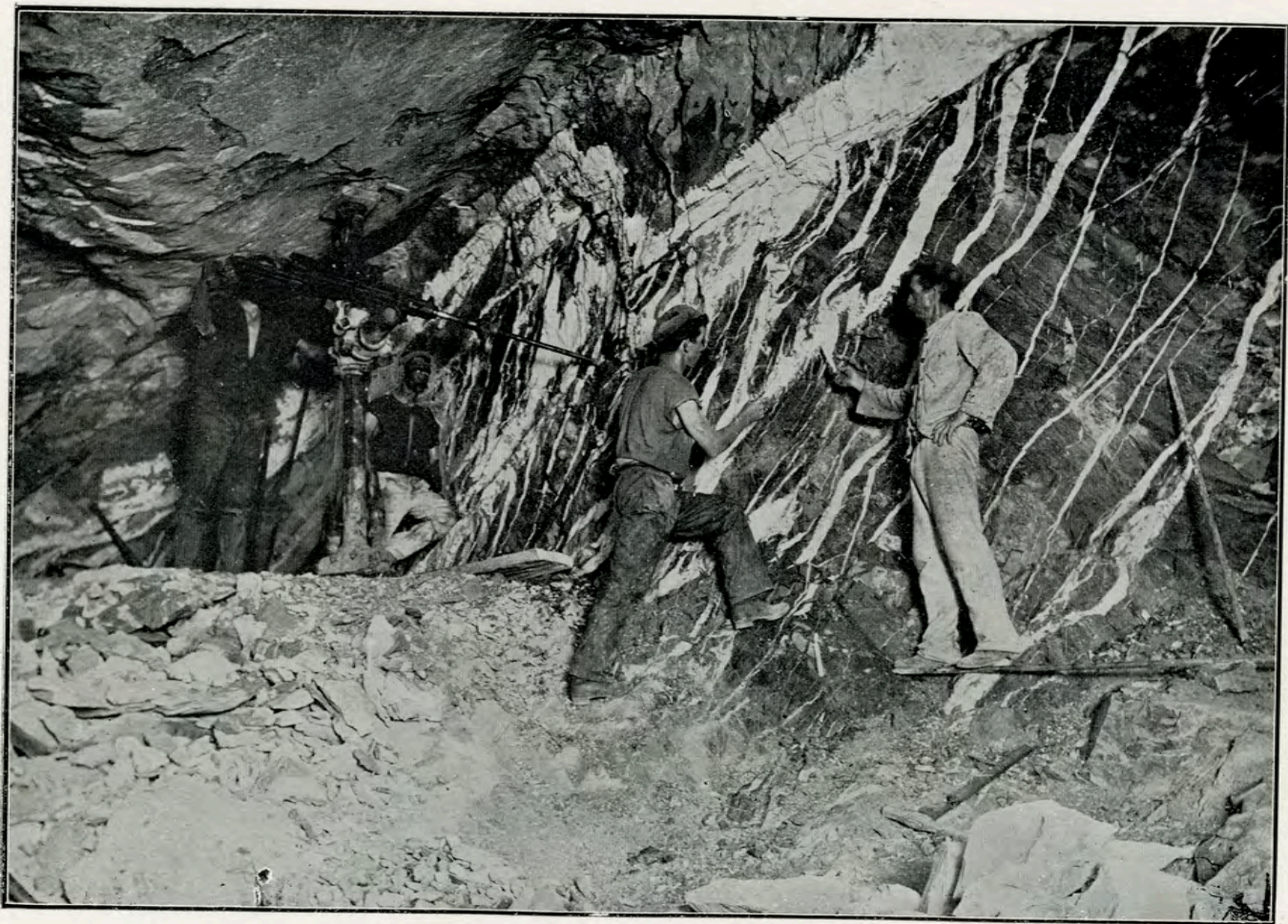
R.C. CHURCH, GYMPIE.



WESLEYAN CHURCH, GYMPIE.



R.C. SCHOOL, GYMPIE.



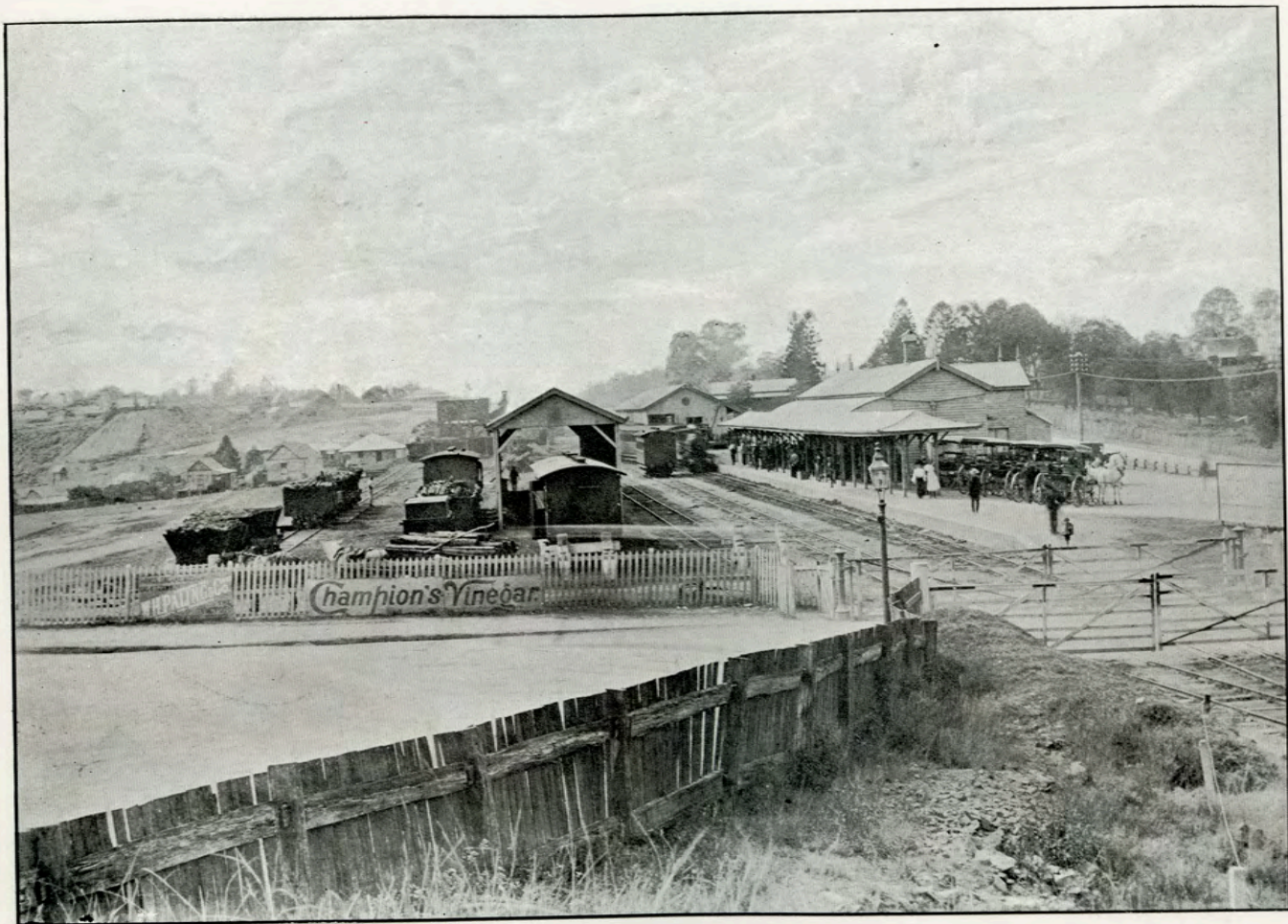
UNDERGROUND WORKINGS, SOUTH EASTERN 1228-FT. LEVEL, GYMPIE.



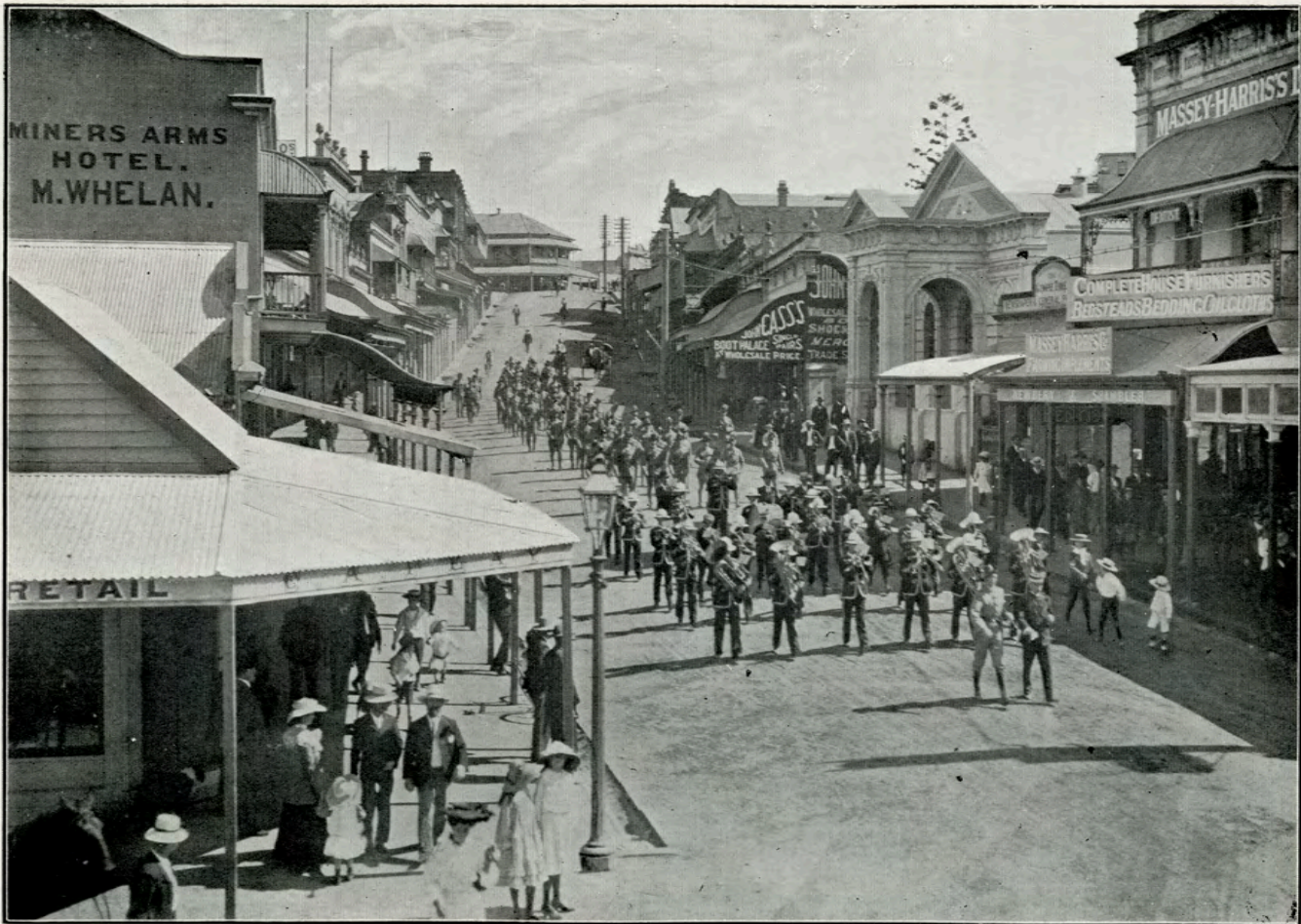
GYMPIE HOSPITAL.



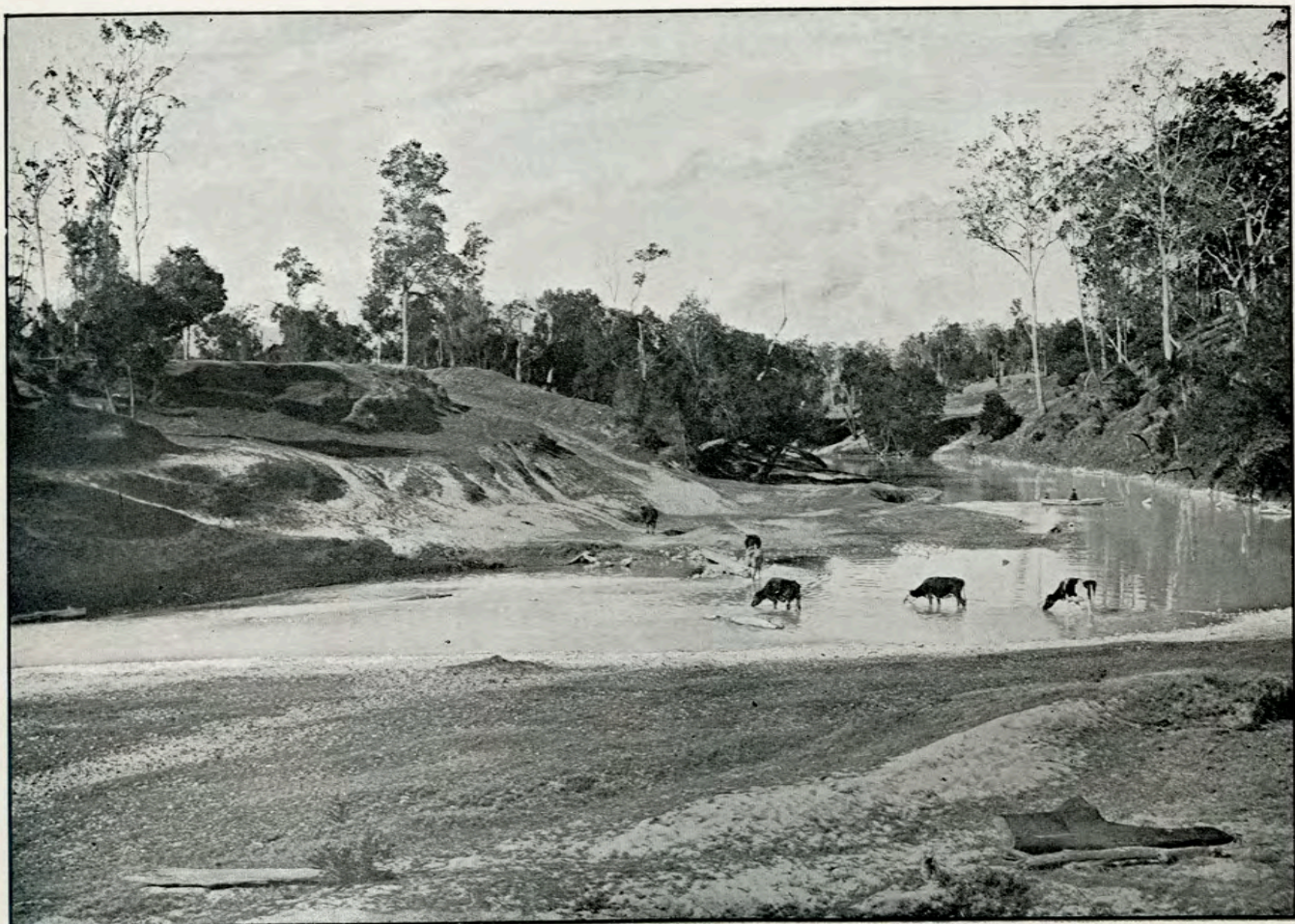
ENGLISH CHURCH, GYMPIE.



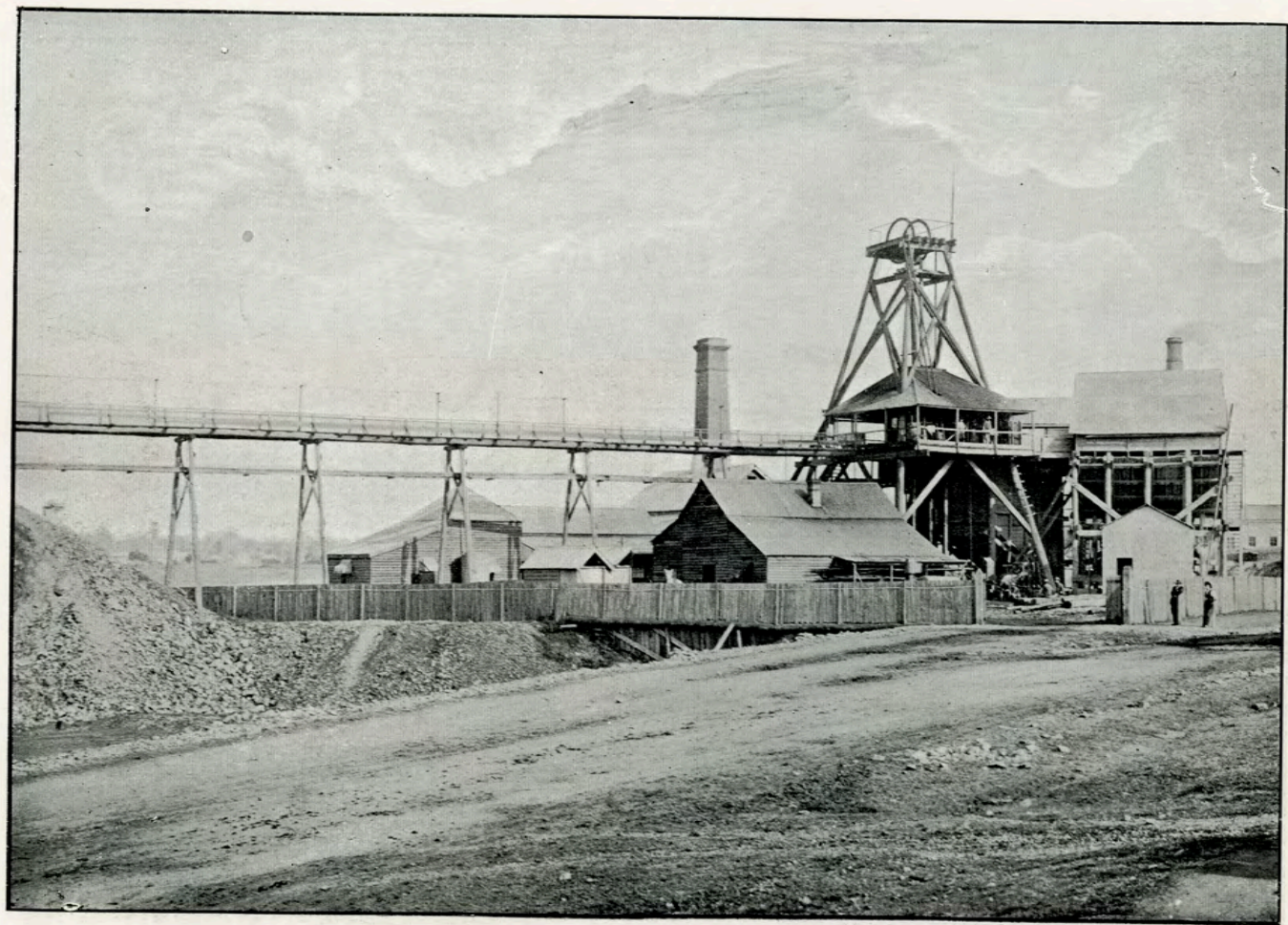
GYMPIE RAILWAY STATION.



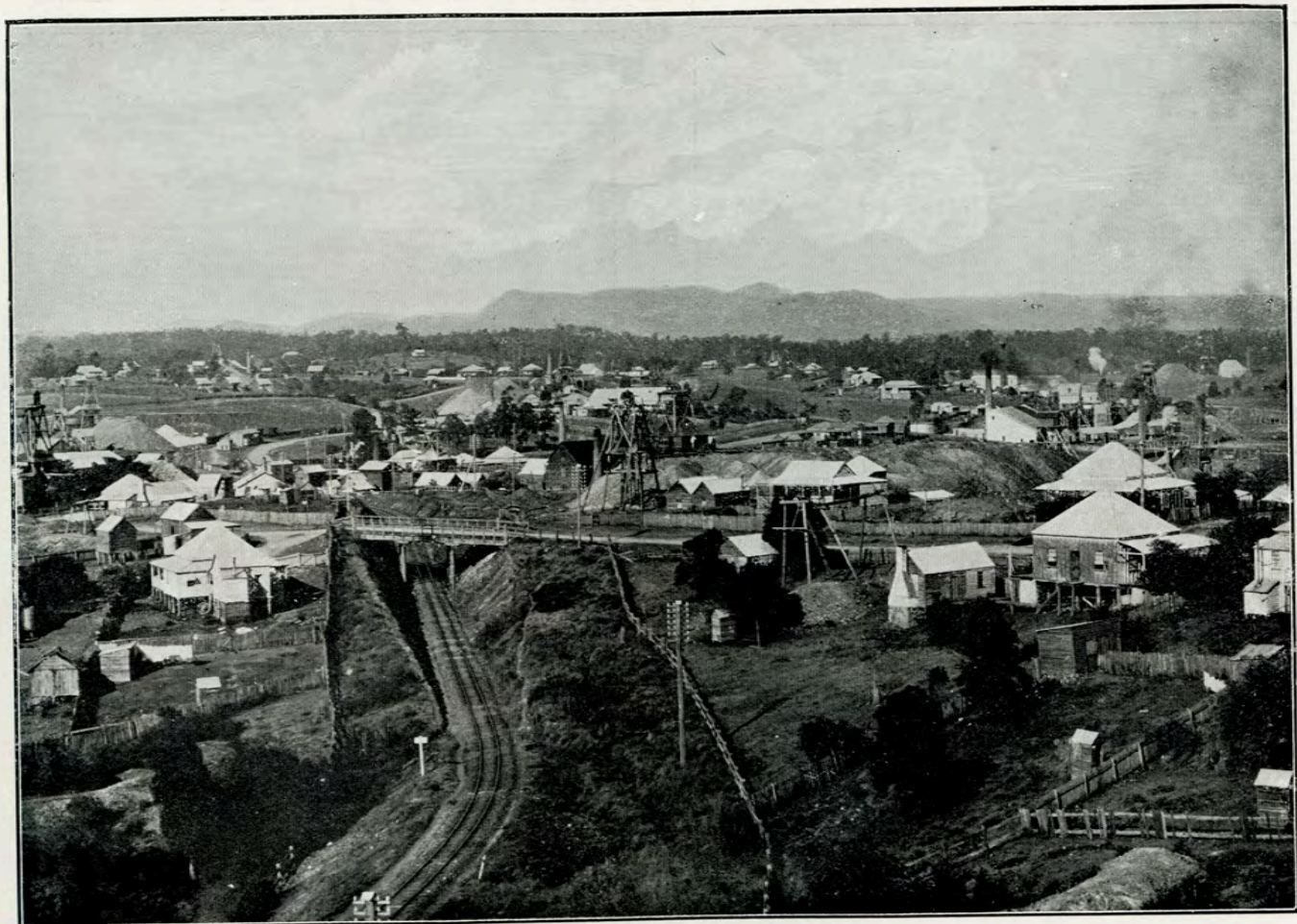
UPPER END OF MARY STREET, GYMPIE.



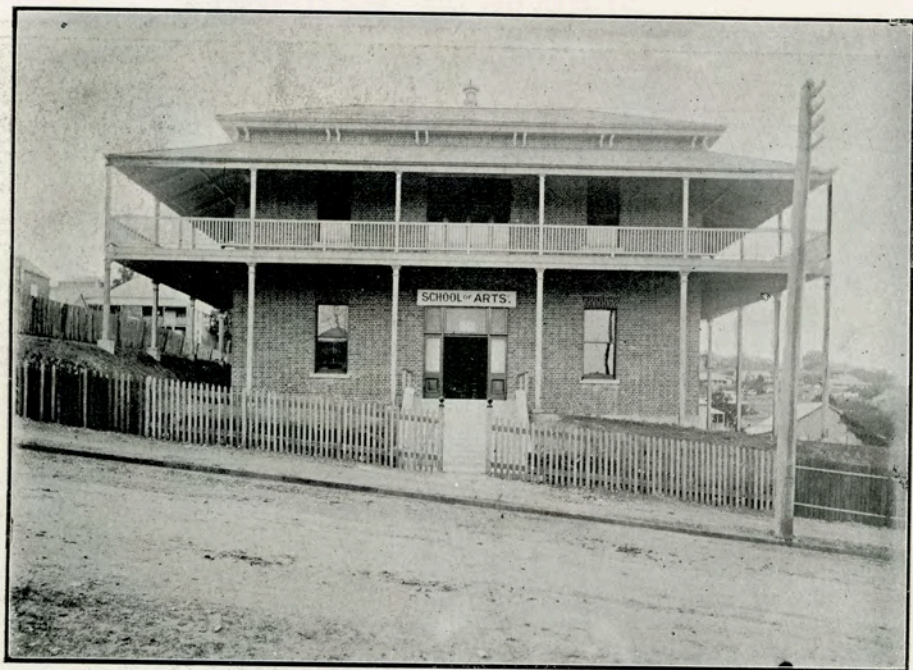
WIDGEE CROSSING, MARY RIVER.



2 SOUTH GREAT EASTERN GOLD MINE, GYMPIE.



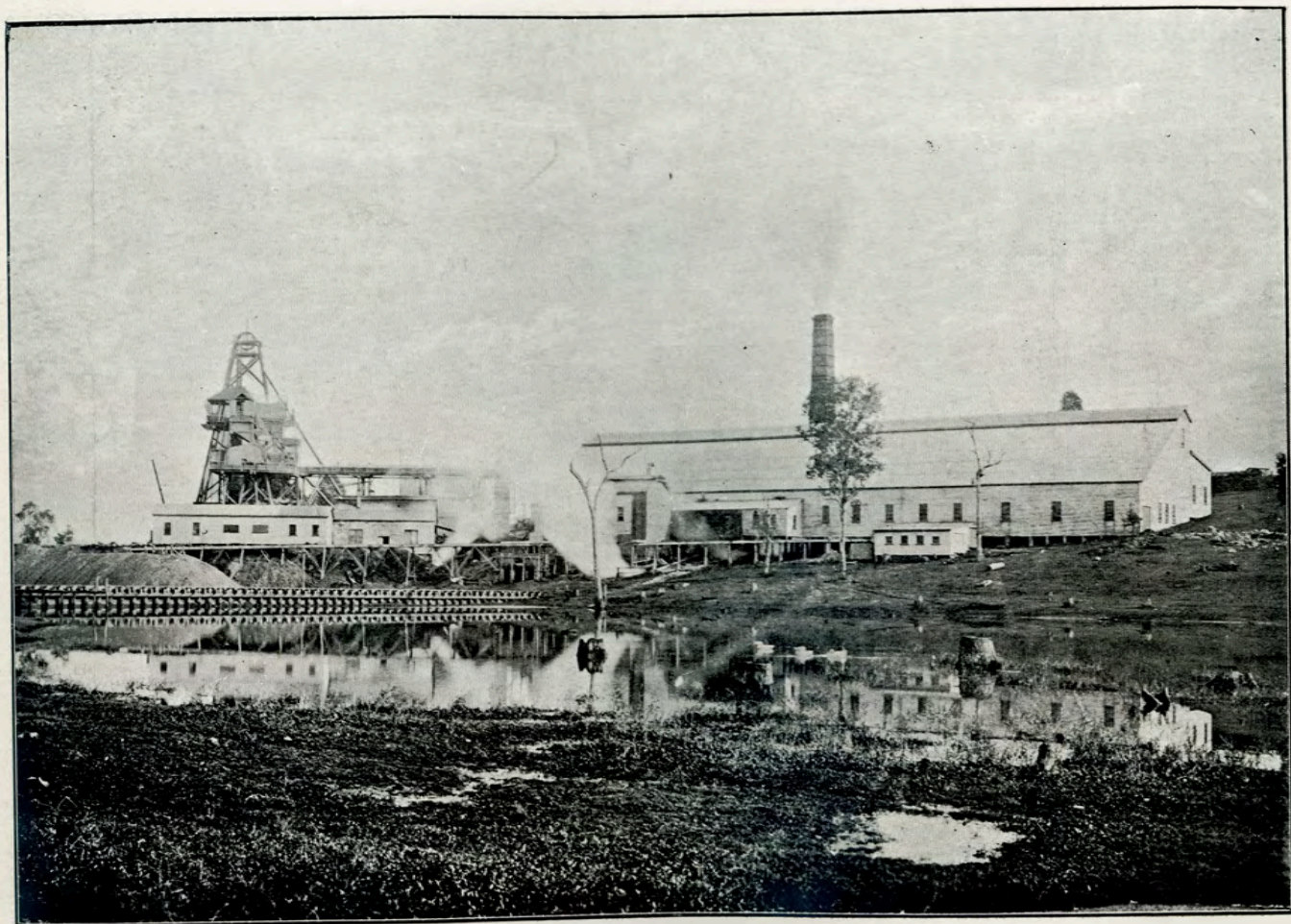
MONKLAND. GYMPIE.



SCHOOL OF ARTS, GYMPIE.



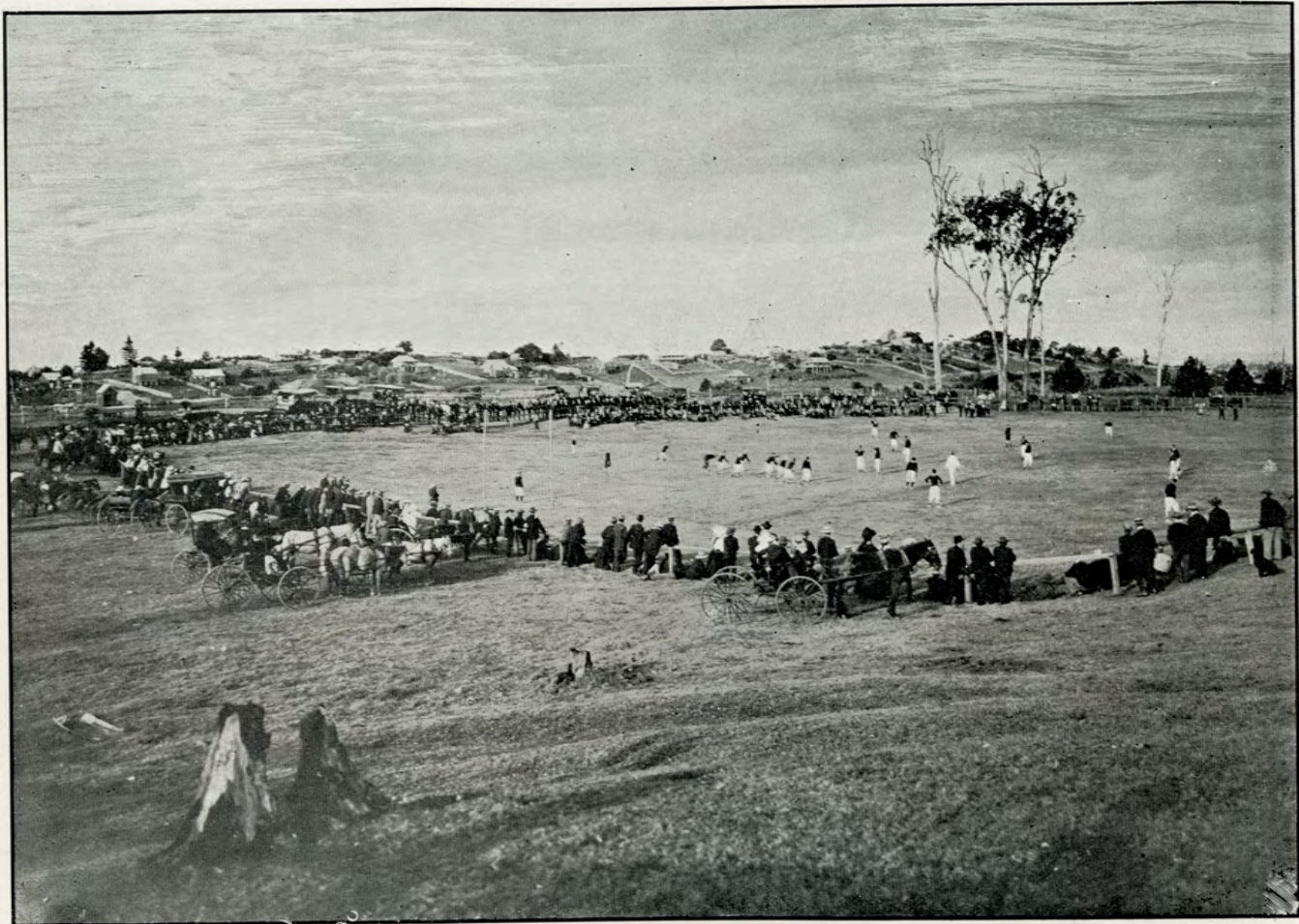
POST AND TELEGRAPH OFFICES, GYMPIE.



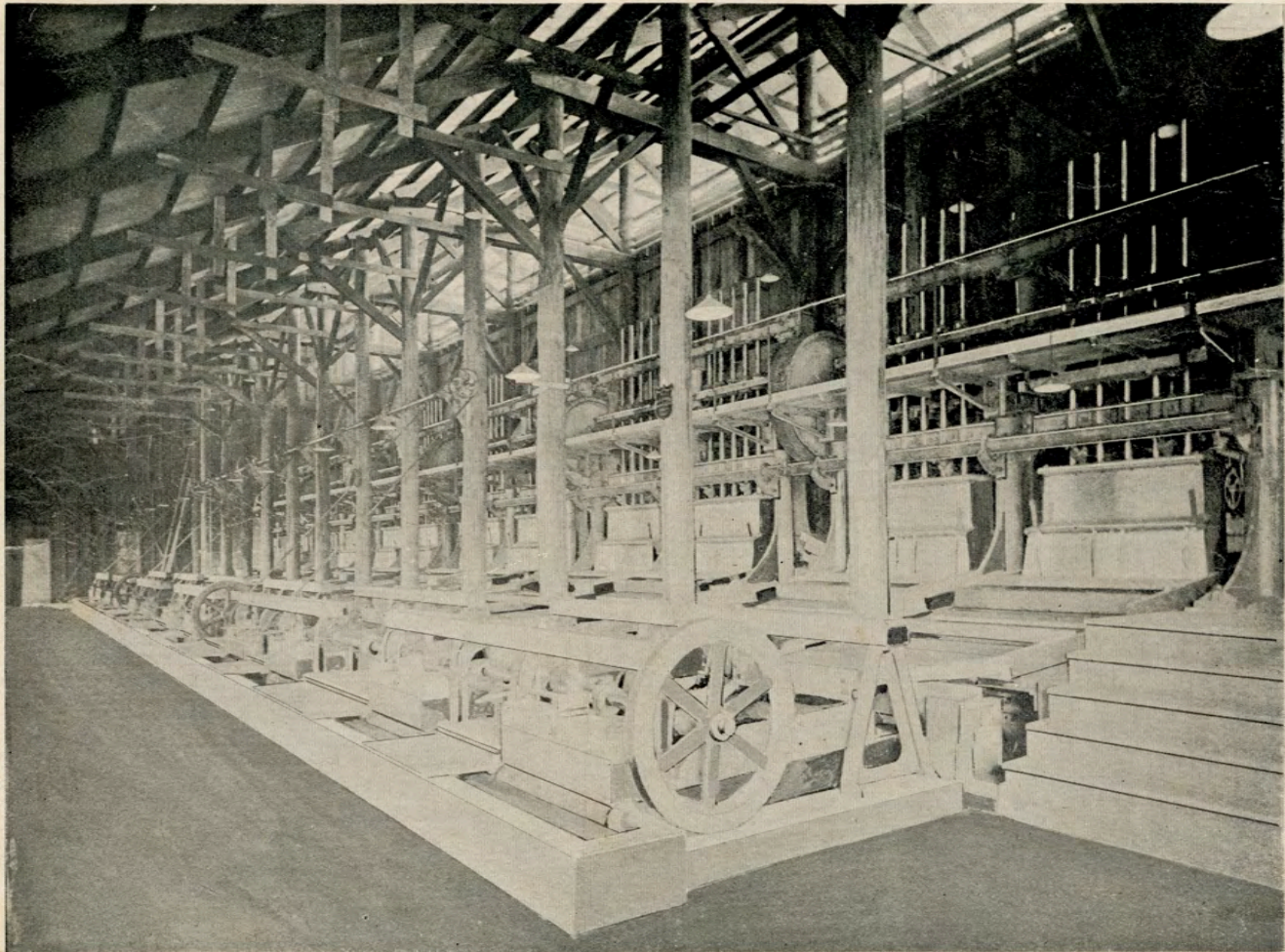
THE SCOTTISH GYMPIE GOLD MINE.



EASTERN SIDE OF RED HILL, GYMPIE.



NORMANBY FOOTBALL GROUND, GYMPIE.



No. 2 SOUTH GREAT EASTERN BATTERY.

